

DRAFT MASTER PLAN 2019

WHAT TO LOOK OUT FOR IN ANG MO KIO!

Known for the relaxed charm of its neighbourhoods, delicious hawker fare and vibrant town centre, Ang Mo Kio will be rejuvenated with new housing precincts and amenities, while preserving its current appeal. The introduction of the Cross Island Line (CRL) and Thomson-East Coast Line (TEL) will mean shorter commutes for residents to other parts of Singapore. For more information on the Draft Master Plan 2019, please visit ura.sg/DMP19.

HOW OUR TOWNS ARE PLANNED

Our towns are planned to be liveable and self-sufficient, with easily accessible shops, health care, schools, community facilities and parks. Commercial nodes, industrial estates and business parks within or nearby the town, also help to provide nearer job opportunities for residents. The detailed planning and implementation of plans for each town is a joint effort of many government agencies.



Ang Mo Kio Town Centre

LENTOR HILLS

Conveniently located right next to the upcoming Lentor MRT station, this future neighbourhood will feature parks and commercial amenities that will also serve residents from Lentor and Teachers' Estate.

THOMSON NATURE PARK

When opened in 2019, visitors will be able to explore trails in the 50-hectare Nature Park and discover the unique flora and fauna of the area, and heritage of a former Hainan village.

NEW HOUSING AT KEBUN BARU

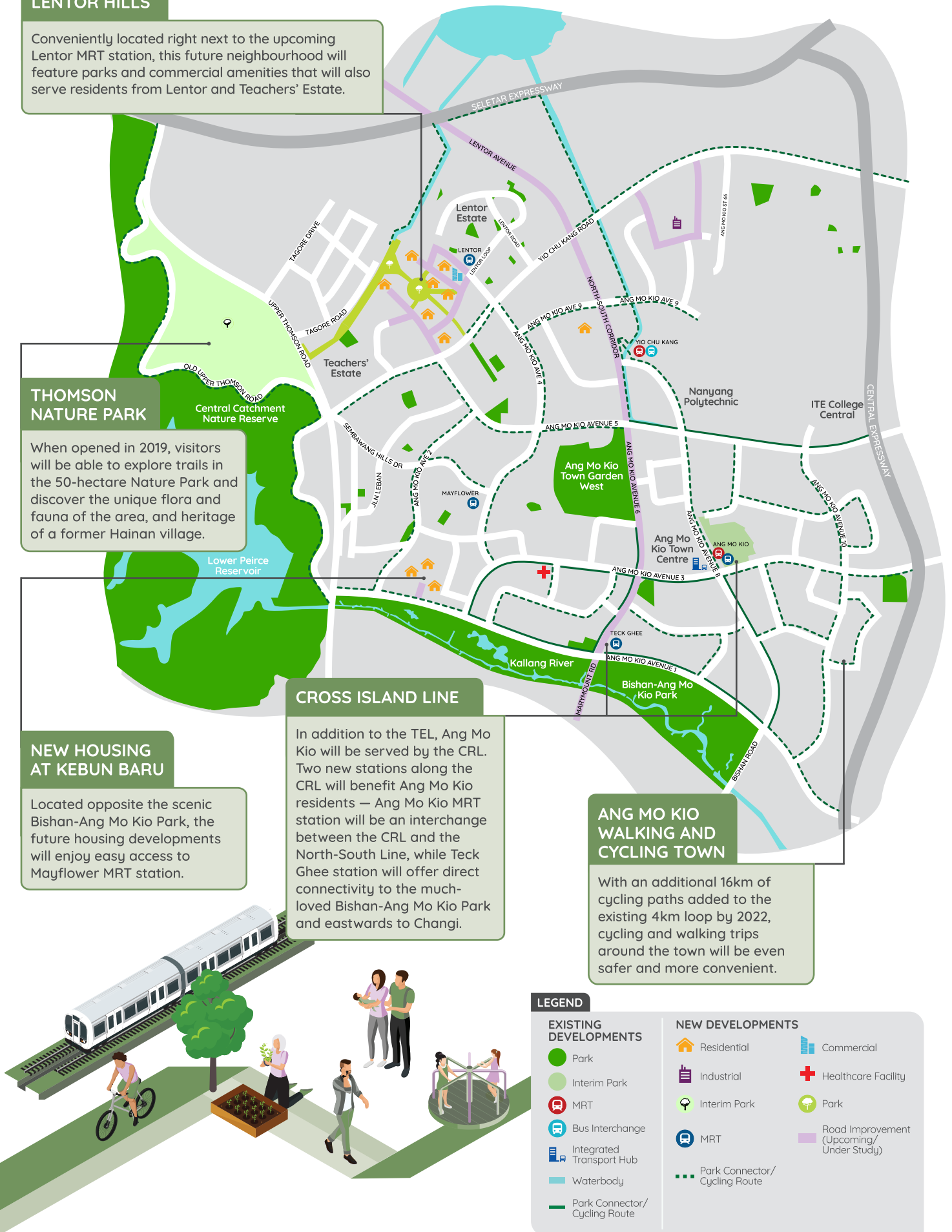
Located opposite the scenic Bishan-Ang Mo Kio Park, the future housing developments will enjoy easy access to Mayflower MRT station.

CROSS ISLAND LINE

In addition to the TEL, Ang Mo Kio will be served by the CRL. Two new stations along the CRL will benefit Ang Mo Kio residents — Ang Mo Kio MRT station will be an interchange between the CRL and the North-South Line, while Teck Ghee station will offer direct connectivity to the much-loved Bishan-Ang Mo Kio Park and eastwards to Changi.

ANG MO KIO WALKING AND CYCLING TOWN

With an additional 16km of cycling paths added to the existing 4km loop by 2022, cycling and walking trips around the town will be even safer and more convenient.



LEGEND

EXISTING DEVELOPMENTS

- Park
- Interim Park
- Ⓜ MRT
- Ⓛ Bus Interchange
- Ⓛ Integrated Transport Hub
- ▬ Waterbody
- ▬ Park Connector/ Cycling Route

NEW DEVELOPMENTS

- 🏠 Residential
- 🏢 Industrial
- 🌳 Interim Park
- Ⓜ MRT
- ▬ Park Connector/ Cycling Route
- 🏢 Commercial
- + Healthcare Facility
- 🌳 Park
- ▬ Road Improvement (Upcoming/ Under Study)